

KRISS COVID-19 Response Program



Dear NMI colleagues,

As you are well aware, millions of people around the world are experiencing difficulties caused by the COVID-19 pandemic.

COVID-19 also wreaked havoc in Korea during the early stages of the pandemic. However, through preemptive nation-wide testing and transparent sharing of infection information, as well as voluntary participation in social distancing by its citizens, Korea is seeing the situation stabilize steadily. Of course, it is too early to say that our work is done.

KRISs has taken various precautions in accordance with the government's policies against the spread of COVID-19. We would like to share our institute's disease prevention measures in the hope that our experiences can help our NMI friends in their fight against this pandemic. Please understand that these measures may need to be applied in manners according to each country's sociocultural standards.

We sincerely hope that we overcome the current COVID-19 crisis in the near future.

Let us overcome this crisis together!

May 2020

Hyun-Min Park
President of KRISs, Korea



1

Organization/ Operation of a Control Tower



- Prior to the mass outbreak of COVID-19, KRIS decided to organize a 'COVID-19 Spread Prevention Control Tower' during a President Meeting.
- A 'COVID-19 Emergency Response Task Force' was established composed of the Vice President as the Chairman and the heads of related departments.
 - Situation reports are made on **a daily basis** to monitor any unusual, alarming signals.
 - **Key institute policies** were made such as response plans and employee procedures.
- The Emergency Response Task Force will continue to operate until the end of the COVID-19 situation.

Rapid Dissemination and Sharing of Institute Policies



- KRIS is working ceaselessly to ensure that our COVID-19 response policies are rapidly and efficiently communicated to all of our employees and visitors.
 - A new 'COVID-19 Response' notice board has been created in institute's intranet, where the employees can share COVID-19 information.
 - Employee guidelines have been posted on the entrances of each building in addition to our institute intranet.
 - Emergency and important matters are sent to all of our employees via e-mails and text messages.



Encouraging Social Distancing



- As a part of our strong social distancing policy, KRIS is working to minimize contact between people.
- We are restricting the number of non-essential visitors.
 - Visits are restricted to crucial meetings; a minimal number of visitors are allowed for calibration service, etc.
 - Visitors are required to wear masks at all times. In case visitors do not have their own masks, KRIS provides one for them.
 - In addition, visitors must fill out a questionnaire, and go through body temperature check using a thermal imaging camera at the main entrance.
- We are also minimizing work activities that involve direct contact such as business trips and meetings.
 - All domestic and overseas business trips are temporarily restricted. Business trips are only allowed in emergency situation under the special permission given by the head of office.
 - Meetings are limited to a minimum number of people, if necessary. All attendees voluntarily wear their masks during the meeting.

Restrictions on the Use of Institute Facilities



- KRIS restricts the use of facilities that involve multiple employee gathering.
 - The use of fitness center, gym, tennis court, etc. is prohibited.
 - **By removing chairs** in cafes/stores/rest areas in the institute, we encourage users to not stay for a prolonged period.
- COVID-19 has also changed our cafeteria rules.
 - **Meal times are now allocated separately** for each department.
 - **Serving method changes:** Self-serve → Served by cafeteria staff.
 - Seats are arranged in **a zig-zag formation.**
 - **To-go menus** such as sandwiches have been added.



Thorough Disinfection for Disease Prevention



- KRIS runs a thorough disease prevention program with regular disinfections.
 - Shared spaces such as buildings, elevators, and institute-run buses undergo **disinfection at least once per week**.
 - We run **daily disinfections** of areas that come in contact with human hands, such as door handles and elevator buttons. We have also attached anti-virus films on elevator buttons.
- **Hand sanitizers are placed in multiple areas for easy use**, such as at all entrances and elevators.
- In addition, the institute has stocked up on masks, hand sanitizers for distribution for emergency uses.



Management of Employees showing Symptoms and Work Attendance Support



- KRISS eliminates potential risks through the close management of employees with symptoms or risks.
 - Employees showing symptoms such as fevers or those who traveled to locations visited by confirmed patients are required to **self-quarantine for 2 weeks**.
 - The government openly discloses the routes taken by confirmed patients. KRISS shares this information through notices and strongly recommends all employees who have visited the same locations to report this information to the institute.
 - * **A quarantine space** has been prepared in the guest rooms of the institute dormitories (**Quarantine packages** including daily commodities and lunchboxes are provided by the institute).
- Various human resource policies have been implemented to assist employees who may be undergoing difficulties due to the COVID-19 outbreak.
 - Telecommuting for pregnant employees
 - Allowing employees in self-quarantine to take official leave with pay
 - Family Care Leave (12 days per year)
 - Telecommuting for employees who have visited major outbreak zones
 - Telecommuting shifts (with each office having 25 ~ 50 % of its members at work)

Support for Industries Struggling due to COVID-19



- KRISS is supporting industries, especially small and medium enterprises (SMEs), which are struggling due to COVID-19.
 - **50 % reduction in costs for calibration/testing services** for SMEs.
 - **70 % reduction in monthly rental fees** for 6 companies located within the institute.
 - **50 % reduction in costs for SMEs contribution** to participate in KRISS-coordinated research projects.

- In addition, we are working to attenuate the burden of SME through various methods, such as transferring technology to SME researchers and subsidizing a portion of personnel costs through KRISS funding.

Related R&D



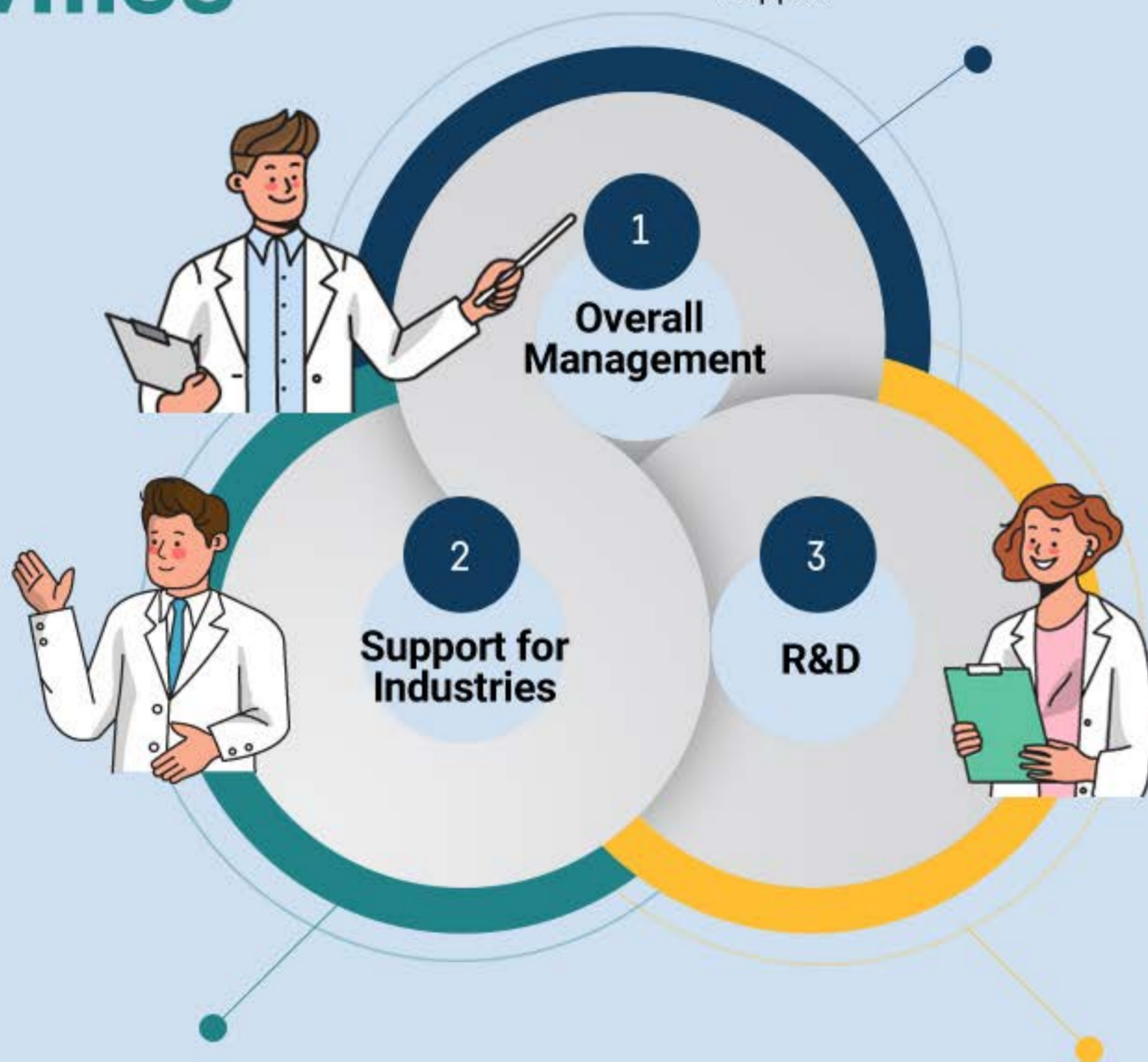
- As one of NMIs, KRIS is doing its utmost to contribute to the resolution of the COVID-19 pandemic through R&D.

- We are currently in the development of '**COVID-19 RNA RMs**' and '**Protein RMs**' to improve the accuracy of virus testing.
* RM: Reference Materials

- In addition, KRIS has recently established the 'Safety Measurement Institute' to actively respond to safety issues. KRIS plans to respond to our global issues in a timely and future-oriented manner.

Summary of KRISS Anti-COVID-19 Activities

- 1) Organization of a control tower
- 2) Dissemination of institute policies
- 3) Encouraging social distancing
- 4) Restriction of shared spaces in the institute
- 5) Thorough disinfection for disease prevention
- 6) Close management of workforce and work attendance support



- 1) Reduced costs of calibration/testing services and rental fees
- 2) Expanded support for SME capacity projects

- 1) COVID-19 RNA RMs, Protein RMs development
- 2) Establishment of a new Safety Measurement Institute to respond to global safety issues in a timely manner

Let's **OVERCOME** **TOGETHER**

We're still connected and united.

